

TRUE STORIES • IDEAS & SOLUTIONS • INSPIRATIONAL STYLE

Unique!

# 25 BEAUTIFUL HOMES

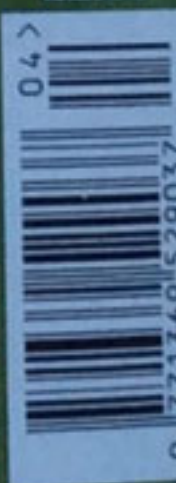
People like you...  
created the homes inside –  
take a look!

BUMPER ISSUE

Watermill ■ Schoolhouse ■ Stableblock & MORE!

COVER STORY 'The house was way beyond our means – but we had to have it!' See P32

April 2000  
£2.60





April 2000

# Contents



It's a strange life, working on a magazine. For one thing, you have to get used to the idea that hundreds of thousands of people are scrutinising what you do each month. Allan and Christine Payne, the owners of one of this month's houses (see p84), brought this

fact home to me all over again when they told our writer that their painted floor and their unusual plate rack were both inspired by 'something we saw in a magazine'. Lots of people tell us that they pick up ideas from 25BH, noting them - and in some cases even filing them away - for future use. It's nice to know that your work is so valued, but it's also quite a responsibility, which is why we always check everything to the best of our ability. And if we do make the odd mistake - hey, we're only human - then we appreciate a call about it so that we can correct it for other readers. So criticism (as well as praise!) is always welcome here.

*Clare*



14

**Editor** Clare Weatherall  
**Art Director** Richard Gadsby  
**Senior Designer** Richard Coombs  
**Associate Editor** Jane Parbury  
**Sub Editor/Writer** Charlotte Bolton  
**Editorial Assistant** Emily Peck  
**Ad Director** Debbie Turner  
**Ad manager** Adrienne Moyce  
 (020 7261 6078)  
**Editor-in-chief** Isobel McKenzie-Price  
**Publisher** Nigel Birch  
**Publishing Director** Yvonne Ramsden  
**Managing Director** Cora Reeves-Smith  
**Production manager** John Botten

**SouthBank**  
 Published by Marketforce

With thanks to Alison  
 Green, Lynne Guyler,  
 Jo Cotton, Mike Carter

Vol 3 No 5 ISSN 1367-5290

**Missed last  
 month's issue?**

Call John Denton  
 services on  
**020 8503 0588**  
 to order back issues of  
**25 Beautiful Homes**

**Our May issue  
 is on sale  
 on 13th April**



40



66

## 32 World class Georgian manor hotel

Cover  
 story

**6 Country living**  
 A bungalow in the Malvern hills

**14 A chequered past**  
 Millhouse with a history

**20 Crème fresh**  
 Light apartment in Corfu

**26 A Victorian romance**  
 Family home with atmosphere

**40 Heart of oak**  
 Arts & Crafts mansion

**46 A sense of guilt**  
 Fantasy terraced house

**50 Stamp of approval**  
 Village post office and home

**54 Flower power**  
 English country house

**58 Toile bed linen offer**  
 Romantic toile de Jouy bed linen

**60 Divine decadence**  
 1930s designer house

**66 Memory lane**  
 Converted gothic schoolhouse

**72 Imperial style**  
 Colonial coach house

**78 Breath of fresh air**  
 Pretty Derbyshire home

**84 Art and graft**  
 Colourful London home

**90 Made to measure**  
 American-style modern house

**96 Private lives**  
 Original art deco house

**100 Buttered up**  
 Sunny London apartment

**104 Home to stay**  
 Stationmaster's cottage

**110 Artful blend**  
 Victorian house in Cheshire

**114 French flair**  
 West country Georgian manor

**120 A zest for life**  
 Family home in Middlesex

**126 Glowing with colour**  
 Renovated London terrace

**130 A Scottish affair**  
 Converted gothic stableblock

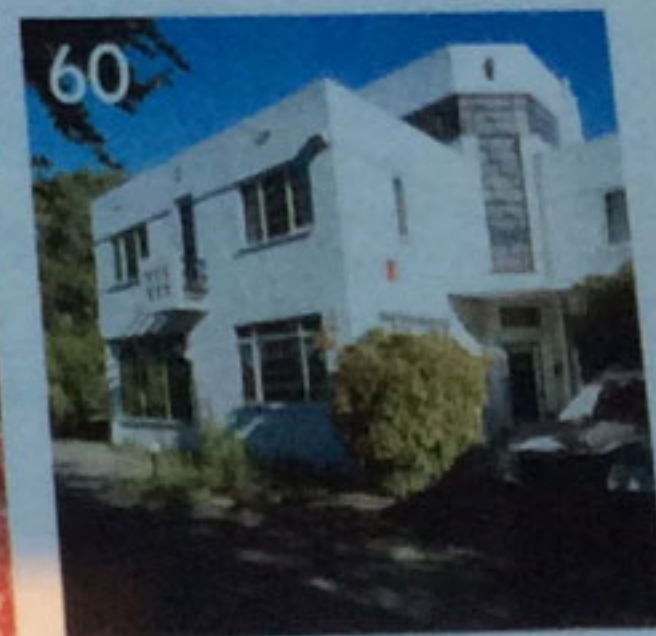
**134 Treasure highland**  
 Home of Robert Louis Stevenson

**138 Clean living**  
 Restored Victorian mansion flat

**146 Your letters**  
 Your views and questions answered



78



60

25 Beautiful Homes, Room 0534, King's Reach Tower, Stamford Street, London SE1 9LS

All prices quoted in this issue - including VAT at the current rate - were correct at the time of going to press, although you are advised to check cost and availability before buying.  
 25 Beautiful Homes is published by IPC SouthBank Publishing Ltd, King's Reach Tower, Stamford Street, London SE1 9LS.  
 © IPC SouthBank Publishing, 2000. Distributed by Marketforce (UK) Ltd, 247 Tottenham Court Road, London W1P 0AU (020 7261 5555)



# Divine decadence

This striking art deco house in Leeds has been sumptuously furnished by Christine and Terry Yorath



A painting by 1930s artist Mica Sidi hangs in the lounge of the Yoraths' home to remind them of the woman who inspired one of the most unusual houses in Leeds.

Like the Yoraths, Mica wanted to live in a place which would be different, reflecting her creative, almost abstract, flair and bearing the hallmarks of her fastidious attention to detail.

The result would have set her back around £3,500 – a small fortune in those days – but she was determined to build a home which would last for ever – including a labyrinth of archways underneath each room to allow access, sprung maple floors, and a bell placed in the floor of the dining room so that Mica could discreetly summon her maid during a dinner party without the guests knowing.

Her perfectionism hasn't been lost on the 1930s



1 The opulent dining room has a black and gold theme, set against a burgundy and grey wallpaper from Laura Ashley (0870 5622116)

two staircases and a hallway with the original mosaic floor

3 Christine loves to decorate in neutral browns and creams

2 1930s artist Mica Sidi designed the striking house, which has 16 rooms,

4 The central staircase, going up three floors, is supported by pillars



## Particulars

**LOCATION**  
Leeds, Yorkshire

**AGE**  
1930s

**BUILDING**  
Three-storey, U-shaped detached house

**ROOMS**  
Hallway, kitchen, sunroom, snooker room, living room, dining room, reception room, 7 bedrooms, 3 bathrooms

**MOVED IN**  
1984





1 Christine  
a false ceiling  
the kitchen  
it more casual  
marble top  
from London  
Cottrell (1982)  
came from  
Harrington  
Co (1984)

2 The price  
the marble  
been applied  
leaded to a  
spectacular

3 In the  
flamboyant  
wall, floor  
curtains  
real sense  
The baby  
piano was  
by the Yor  
around, the  
1930s with  
give later  
of the game

*'This house has everything I'd include if I built it from scratch'*



current owners, property designer  
Christine Yorath and her husband  
the former Leeds Utd player and  
coach at Bradford City Football  
Club. Together they have created their  
style of home to a standard and style  
Mint would, undoubtedly, have  
rewired, reroofed, extended and altered  
the essence of the 1930s house retaining  
its unusual glory, complete with  
hallway, period staircases and bay  
windows. 'This house has everything I  
have included in a place if I had built  
from scratch,' says Christine. 'It remains  
American West Coast architecture.'

It would be easy to get lost in the  
rooms, corridors and recesses of the  
home. But once visited, never forget  
Christine has decorated the house with  
sumptuous mix of treasures from the  
world, family antiques and eye-catching  
rative effects, all set against the  
original features of the house. The  
room, for example, is decorated in







1 The door is wonderful - the top, the basins, the marble and accessories are all kitsch, but it's Christ

2 13-year Jordan's cheerful in blue. He's an ardent fan of Leeds and club his to play for the latest hung about

3 This room is subtly in aubergine cream. Do Gabby, presenter here who

1



2



3

into gold backing, a material which would be impossible to find now, and all around are the angular details so typical of the art deco style.

Christine confesses to a love of natural textures, hence the use of pure wool, cream curtains and wooden blinds throughout. However, she is not a spendthrift. 'I don't believe in spending silly money,' she says. 'I buy a lot of my fabric from Indian shops, and I will buy braid at 20p a metre to transform the look of curtains or a pelmet.'

This talent extends to the furniture, with many pieces being gilded, transformed with a paint effect or re-covered to look like antiques. A black and gold Chinese screen stands beside £2 chairs which Christine 'antiqued' herself. The pullball-effect curtains in the living room are in fact stuffed with tissue and tied back with dressing gown cord.

The most extraordinary room in the house is the main entrance hall, with its original mosaic floor and sycamore doors into the lounge, original light fittings and cornicing, arched doorways and the cantilevered staircase supported by pillars. Glance up and you can see three flights of art deco stairs - complete with original square detail - leading

up to the 40ft high ceiling. To Christine has linked this stunning rooms leading from it with silk silks, organza, brocade and glamour to this light, bright space.

Christine's office is based and usually it's all go at the York. But just occasionally Christine to take stock of her unusual certainly a one-off,' she says. it's the place we call home.

WORDS Heather  
PHOTOGRAPHS Jere

**25 Good**

The animal-print rug on the dining room floor is very eye-catching. Fairman Carpets (020 7229 2262) sell similar rugs, all handmade in Tibet from Himalayan wool, at prices from £300 a square metre.